



香港教育大學

The Education University
of Hong Kong

2ND MAJORS & MINORS



2022/23



Hello

你好

Bonjour

안녕

Ciao



FACULTY OF HUMANITIES | 學人院文
人脈弘道 *Humanity can broaden the Way*

Second Majors & Minors

Contents

| | |
|-----------------------|----|
| Second Majors | 02 |
| Minors | 04 |
| General Education | 13 |
| Free Elective Courses | 15 |
| Enquiries | 17 |

A Second Major or a Minor in the humanities helps broaden and enrich your study in various aspects of human culture, including languages, literatures, cultures, religions and language education. The courses and programmes in the humanities provide you with the knowledge, intellectual skills and habits of thought indispensable to modern education.

There may be some restrictions on the choices of Second Majors/Minors for some programmes. Please read carefully the requirements of the Second Majors/Minors and consult the offering departments/programmes before you make the choices.

Second Majors/Minors will not lead to a Qualified Teacher Status. Teaching practice or immersion/internship will not be arranged for students of Second Majors/Minors.

Each course carries 3 credit points (CPs).



SECOND MAJORS

Chinese Language 中國語文

English Language 英國語文

MINORS

Chinese Language 中國語文

Chinese Religions and Culture 中國宗教與文化

English Language 英國語文

English Language Teaching (Primary) 英語教育 (小學)

English Language Teaching (Secondary) 英語教育 (中學)

Film and Popular Culture 電影與流行文化

French Studies 法語

Japanese Studies 日語

Language and Society 語言與社會

Studies on Chinese Language Curriculum 中國語文課程研究

Teaching Chinese as an International Language 國際漢語教學

Translation 翻譯

SECOND MAJORS

Students of 4-/5-year full-time undergraduate programmes may be permitted to enroll in a Second Major, subject to

- Programme specific requirements; and
- GPA requirement of 3.00 or above in the first year of study.

The minimum credit requirement for the Second Majors offered by FHM is 36.

Chinese Language 中國語文



Students who take Chinese Language as a Second Major will be able to demonstrate a sound understanding of the Chinese Language and advance their knowledge in the disciplines of linguistics, literature and culture.

Pre-requisite Requirements and Other Conditions for Declaring a Second Major:

- Level 3 or above in Chinese Language in HKDSE, or equivalent;
- Year 1 GPA: 3.00 or above; and
- Applicants may be invited for an interview.

| Domain | Course Code | Course Title | Dept |
|-------------------------------------|-------------|-------------------------------|------|
| Core | CHI1559 | 現代漢語 | CHL |
| | CHI3714 | 古代漢語 | CHL |
| | CUS1002 | 中國文化概說 | LCS |
| | CUS4019 | 中國思想：原典選讀 | LCS |
| | LIT1001 | 文學概論 | LCS |
| | LIT2006 | 中國古代文學（一）（先秦－隋唐） | LCS |
| | LIT2007 | 中國古代文學（二）（宋－清） | LCS |
| | LIT2008 | 中國現代文學 | LCS |
| Electives (choose any 4 courses) | CHI2450 | 語言傳播的理論與應用 | LML |
| | CHI2571 | 媒體寫作 | LCS |
| | CHI3452 | 篇章語言分析 | LML |
| | CHI3565 | 漢語修辭學 | LML |
| | CHI3575 | 漢字學 | CHL |
| | CHI3712 | 粵語與香港本土文化 | CHL |
| | CHI4577 | 漢語音韻學 | CHL |
| | CHI4585 | 中國傳統語言學專書研讀 (先修科目：CHI3714) | CHL |
| | CUS1001 | 中國傳統人生哲學 | LCS |
| | LIT1002 | 兒童文學 | LCS |
| | LIT2003 | 文學創作 | LCS |
| | LIT3013 | 專家詩 | LCS |
| | LIT3014 | 香港文學 | LCS |
| | LIT3015 | 明清小說 | LCS |
| | LIT4020 | 中國文學批評 | LCS |
| | LIT4023 | 莊子 | LCS |
| | LIT4024 | 詩經楚辭 | LCS |
| | LIT4025 | 中國文學與其他藝術 | LCS |

English Language 英國語文

Students who take English Language as Second Major will have in-depth knowledge of English as a language. They will advance their knowledge in the disciplines of linguistics, literature and applied English studies, in areas such as Phonetics and Phonology, Lexis, Morphology and Semantics, Grammar, Written and Spoken Discourse, Literature and Language Arts, Psycholinguistics, and Sociolinguistics.

Pre-requisite Requirements and Other Conditions for Declaring a Second Major:

- IELTS 6.5 or above (with no paper below 6.0);
- Year 1 GPA: 3.00 or above; and
- Applicants may be invited for an interview.

(Note: Students getting an average of Grade B or above in Year 1 mandatory English Enhancement courses will be considered more favorably.)

| Domain | Course Code | Course Title | Dept |
|-------------------------------------|--------------------------------|--|------|
| Core | ENG1249 ^{<} | English Grammar for Teachers I | LML |
| | ENG1324 | Introduction to Linguistics | LML |
| | ENG1326 | Introduction to English Phonetics and Phonology | LML |
| | ENG2246 | Introduction to Sociolinguistics | LML |
| | ENG2347 | Words and Their Meanings | LML |
| | ENG3340 | Spoken and Written Discourse | LML |
| | ENG4419 | Second Language Acquisition and Curriculum Design: Theory and Practice | ELE |
| | LIT1040 | Approaching English Literature | LCS |
| Electives (choose any 4 courses) | CUS3014 | Introduction to Film Studies | LCS |
| | CUS3015 | Approaching Popular Media | LCS |
| | ENG2250 ^Δ | English Grammar for Teachers II | LML |
| | ENG2336 | Intercultural Communication | LML |
| | ENG3266 | Classroom Discourse Analysis | ELE |
| | ENG3267 | Language and Gender | LML |
| | ENG3323 | Teaching Grammar & Vocabulary | ELE |
| | ENG3346 | English as a Global Language | LML |
| | ENG3399 | Teaching Pronunciation (pre-requisite: ENG1326) | ELE |
| | ENG3400 | Advanced Phonology (pre-requisite: ENG1326) | LML |
| | ENG3416 | Written Genres and the Genre Approach to ELT | ELE |
| | ENG3435 | Integrating Information Technology in the ESL/EFL Classroom | ELE |
| | ENG3437 | Fostering Intercultural Learning and Growing: From Theory to Practice | ELE |
| | ENG4269 | Comparative Language Studies | LML |
| | ENG4280 | Language Assessment | ELE |
| | ENG4292 | Pragmatics | LML |
| | ENG4413 | Teaching English Literature | ELE |
| | ENG4417 | Motivation to Learn English: Theories and Practice | ELE |
| | ENG4436 | Drama in the ESL/EFL Classroom (pre-requisite: LIT3049) | ELE |
| | ENG5236 | ELT Methodology: Innovation and Change | ELE |
| | LIN3021 | Language, Brain and the Mind | LML |
| | LIT2048 | Literature in Context I: 1789 - 1914 | LCS |
| | LIT3046 | Creative Writing | LCS |
| | LIT3047 | Literatures in English: Poetry | LCS |
| | LIT3049 | Drama Performance and Playwriting | LCS |
| | LIT3050 | Readings in New Literatures in English | LCS |
| | LIT3051 | Children's and Adolescent Literature | LCS |
| | LIT3052 | Literature in Context II: 1914 - 2000 | LCS |
| | LIT4054 | Shakespeare | LCS |
| | LIT4055 | Postcolonial Literatures in English | LCS |
| LIT4060 | Literature and the Environment | LCS | |

[<] The title of this course is very similar to another course, ENG2325 English Grammar I, which cannot be used to form Second Major/Minor in English Language. Please check the course code carefully during course registration.

^Δ The title of this course is very similar to another course, ENG3329 English Grammar II, which cannot be used to form Second Major/Minor in English Language. Please check the course code carefully during course registration.

MINORS

Students of full-time undergraduate programmes (except those with programme/curriculum restriction) have the option of taking a Minor of 15 cps (or two Minors) of taught courses in the Core and Elective Domains for graduation with Minor(s), subject to specific requirements of the Minor(s).

Chinese Language 中國語文



The Minor enables students to explore Chinese language and its cultures through various linguistics, literature and culture courses offered. Those who graduate with Chinese Language as a Minor will be able to demonstrate a basic knowledge about how the Chinese language can be analysed and about how it is used to communicate in social, cultural and/or professional contexts.

| Domain | Course Code | Course Title | Dept |
|------------------------------------|-------------|--------------------|------|
| Core (choose any 4 courses) | CHI1559 | 現代漢語 | CHL |
| | CHI2450 | 語言傳播的理論與應用 | LML |
| | CHI3565 | 漢語修辭學 | LML |
| | CHI3714 | 古代漢語 | CHL |
| | CUS1001 | 中國傳統人生哲學 | LCS |
| | LIT1001 | 文學概論 | LCS |
| | LIT1002 | 兒童文學 | LCS |
| | LIT2003 | 文學創作 | LCS |
| | LIT2006 | 中國古代文學 (一) (先秦-隋唐) | LCS |
| | LIT2007 | 中國古代文學 (二) (宋-清) | LCS |
| Electives (choose any 1 course) | LIT2008 | 中國現代文學 | LCS |
| | CHI3575 | 漢字學 | CHL |
| | CHI4577 | 漢語音韻學 | CHL |
| | LIT3013 | 專家詩 | LCS |
| | LIT3014 | 香港文學 | LCS |
| | LIT4020 | 中國文學批評 | LCS |



Chinese Religions and Culture 中國宗教與文化

This Minor aims to deepen students' understanding of popular religious beliefs and customs in Chinese culture. By studying the major religions in China, their impact on ancient and modern Chinese cultural history, and the cultural collision and religious transformation after the spread of Western religions in China, students will grasp the way religions and culture influence the life of Chinese, and gain a more comprehensive understanding of Chinese traditional culture.

| Domain | Course Code | Course Title | Dept |
|-------------------------------------|-------------|--------------|------|
| Electives (choose any 5 courses) | CUS1001#♦ | 中國傳統人生哲學 | LCS |
| | CUS1003 | 宗教傳播與社會變遷 | |
| | CUS2005 | 西方宗教與中國文化 | |
| | CUS3007 | 儒道文化互動 | |
| | CUS3008 | 佛教在香港 | |
| | CUS4009 | 中西神話的文化想像 | |
| | CUS4019# | 中國思想：原典選讀 | |
| | LIT5030 | 周易 | |

The courses, which are Major Core of BEd(CL) (Programme Code: A5B060), are **only applicable for non-BEd(CL) students**.

♦ The course, which is Major Core of BA(Lang Studies) (Programme Code: A4B067), is **only applicable for non-BA(Lang Studies) students**.



English Language 英國語文

The Minor gives students opportunities to explore the English language and also to acquaint themselves with some of its associated cultures through the various linguistics and literature courses offered. Those who graduate with English Language as a Minor will be able to demonstrate a basic knowledge about how the English language can be analysed and about how it is used to communicate in social, cultural and/or professional contexts.

| Domain | Course Code | Course Title | Dept |
|-------------------------------------|--|---|------|
| Electives (choose any 5 courses) | CUS3014 | Introduction to Film Studies | LCS |
| | CUS3015 | Approaching Popular Media | LCS |
| | ENG1249 ^{<} | English Grammar for Teachers I | LML |
| | ENG1324 | Introduction to Linguistics | LML |
| | ENG1326 | Introduction to English Phonetics and Phonology | LML |
| | ENG2246 | Introduction to Sociolinguistics | LML |
| | ENG2250 ^Δ | English Grammar for Teachers II | LML |
| | ENG2336 | Intercultural Communication | LML |
| | ENG2347 | Words and Their Meanings | LML |
| | ENG3266 | Classroom Discourse Analysis | ELE |
| | ENG3267 | Language and Gender | LML |
| | ENG3323 | Teaching Grammar & Vocabulary | ELE |
| | ENG3340 | Spoken and Written Discourse | LML |
| | ENG3346 | English as a Global Language | LML |
| | ENG3399 | Teaching Pronunciation (pre-requisite: ENG1326) | ELE |
| | ENG3400 | Advanced Phonology (pre-requisite: ENG1326) | LML |
| | ENG3416 | Written Genres and the Genre Approach to ELT | ELE |
| | ENG3435 | Integrating Information Technology in the ESL/EFL Classroom | ELE |
| | ENG3437 | Fostering Intercultural Learning and Growing: From Theory to Practice | ELE |
| | ENG4269 | Comparative Language Studies | LML |
| | ENG4280 | Language Assessment | ELE |
| | ENG4292 | Pragmatics | LML |
| | ENG4413 | Teaching English Literature | ELE |
| | ENG4417 | Motivation to Learn English: Theories and Practice | ELE |
| | ENG4419 | Second Language Acquisition and Curriculum Design: Theory and Practice | ELE |
| | ENG4436 | Drama in the ESL/EFL Classroom (pre-requisite: LIT3049) | ELE |
| | ENG5236 | ELT Methodology: Innovation and Change | ELE |
| | LIN3021 | Language, Brain and the Mind | LML |
| LIT1040 | Approaching English Literature | LCS | |
| LIT2048 | Literature in Context I: 1789 - 1914 | LCS | |
| LIT3046 | Creative Writing | LCS | |
| LIT3047 | Literatures in English: Poetry | LCS | |
| LIT3049 | Drama Performance and Playwriting | LCS | |
| LIT3050 | Readings in New Literatures in English | LCS | |
| LIT3051 | Children's and Adolescent Literature | LCS | |
| LIT3052 | Literature in Context II: 1914 - 2000 | LCS | |
| LIT4054 | Shakespeare | LCS | |
| LIT4055 | Postcolonial Literatures in English | LCS | |
| LIT4060 | Literature and the Environment | LCS | |

[<] The title of this course is very similar to another course, ENG2325 English Grammar I, which cannot be used to form Second Major/Minor in English Language. Please check the course code carefully during course registration.

^Δ The title of this course is very similar to another course, ENG3329 English Grammar II, which cannot be used to form Second Major/Minor in English Language. Please check the course code carefully during course registration.

English Language Teaching (Primary/Secondary) 英語教育 (小學 / 中學)



These Minors focus on the teaching of the English language in primary schools (Primary Strand)/ secondary schools (Secondary Strand) and the practical issues and strategies involved. They enable students to have an understanding of how English is taught and help learners develop meta-knowledge and meta-cognition of the second language learning processes and strategies, which can be useful to their own English language learning.

These Minors are only offered to undergraduate students in their 3rd year of study or beyond. The exit requirement of these Minors is IELTS 6.5 (with no sub-score lower than 6.0) or equivalent.

Primary Strand

| Domain | Course Code | Course Title | Dept |
|-------------------------------------|---|---|------|
| Core | ENG2256 | Primary ELT Methods I | ELE |
| | ENG3261 | Primary ELT Methods II | |
| | ENG4419 ^Ω | Second Language Acquisition and Curriculum Design: Theory and Practice | |
| Electives (choose any 2 courses) | ENG2402 | Children's Literature in the ESL/EFL Classroom | ELE |
| | ENG3323 | Teaching Grammar and Vocabulary | |
| | ENG3399 | Teaching Pronunciation (pre-requisite: ENG1326) | |
| | ENG3416 | Written Genres and the Genre Approach to ELT | |
| | ENG3435 | Integrating Information Technology in the ESL/EFL Classroom | |
| | ENG4280 | Language Assessment | |
| | ENG4285 | Content-based Language Teaching (pre-requisite: ENG3261 or ENG3262) | |
| | ENG4342 | Theories of Language Learning: Cognition and Context | |
| ENG4436 [#] | Drama in the ESL/EFL Classroom (pre-requisite: ENG2333, ENG3274 and LIT3049) | | |

Secondary Strand

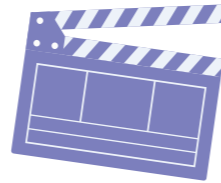
| Domain | Course Code | Course Title | Dept |
|-------------------------------------|---|---|------|
| Core | ENG2257 | Secondary ELT Methods I | ELE |
| | ENG3262 | Secondary ELT Methods II | |
| | ENG4419 ^Ω | Second Language Acquisition and Curriculum Design: Theory and Practice | |
| Electives (choose any 2 courses) | ENG2403 | Using Language Arts and Non-language Arts in the ESL/ EFL Classroom | ELE |
| | ENG3323 | Teaching Grammar and Vocabulary | |
| | ENG3399 | Teaching Pronunciation (pre-requisite: ENG1326) | |
| | ENG3416 | Written Genres and the Genre Approach to ELT | |
| | ENG3435 | Integrating Information Technology in the ESL/EFL Classroom | |
| | ENG4280 | Language Assessment | |
| | ENG4285 | Content-based Language Teaching (pre-requisite: ENG3261 or ENG3262) | |
| | ENG4342 | Theories of Language Learning: Cognition and Context | |
| ENG4436 [#] | Drama in the ESL/EFL Classroom (pre-requisite: ENG2333, ENG3274 and LIT3049) | | |

^Ω ENG4419 is a Common Core for the two strands. Based on the policy that no double counting is permitted, students wishing to take Double Minors in both strands are required to take a total of 5 elective courses from the lists, in addition to the required Core courses (ie a total of 5 Core courses from both strands) to make up a total of 10 courses.

[#] Students who have not taken the pre-requisite course yet should submit their applications for exemption to the course lecturer directly by email. After getting the approval, students have to contact their programme office to register the course manually.

Film and Popular Culture

電影與流行文化



Entertainment media, including film and popular culture, can have a profound impact on individual knowledge and behaviour and on society. Filmmakers and popular culture exponents play an increasingly vital role in shaping public opinion and transforming society. This Minor aims to equip students with the skills to identify and analyse key issues in the study of film and popular culture, guiding them to acquire a global and critical sensibility.

| Domain | Course Code | Course Title | Dept |
|-------------------------------------|--------------------------|---|------|
| Electives (choose any 5 courses) | CUS2004 | 中國電影：創作、風格和接受 | LCS |
| | CUS2012 | English Language Popular Culture | |
| | CUS3014 or CUS3016 | Introduction to Film Studies or Studying Films in Context | |
| | CUS3015 | Approaching Popular Media | |
| | CUS3017 | Gender and Popular Culture | |
| | CUS3019 | 電視劇：文本，觀眾與身份認同 | |
| | HIS3038 | 近代中國文化史：電影、流行文化和政治 | |
| | LIT4056 | Literature and Film | |

French Studies

法語



In line with the University's twin goals of internationalisation and developing students' global awareness, the Minor in the French Studies programme is primarily designed to enrich our students' major studies by content learning (ie French art, culture, education, and/or history) at the University or during their exchange semester(s) in a French university. The second objective of this Minor programme is to equip our students with a level of French competence equivalent to Level A2 or B1 with regard to the Common European Framework of Reference (CEFR).

| Domain | Course Code | Course Title | Dept |
|------------------------------------|----------------------|------------------------------------|------|
| Core | LIN1014 [∞] | French I | LML |
| | LIN1017 | French II | |
| | LIN1024 | French III | |
| | LIN3025 | French IV | |
| Electives (choose any 1 course) | LIN1041 | The French-speaking World in Films | LML |
| | HIS2036 | History of Modern France | LCS |
| | LIN3029 | French Language and Culture | LML |

[∞] Students who have basic French proficiency have the option of taking an additional elective from the list to replace LIN1014 French I. Students' proficiency will be assessed before approval.

Japanese Studies

日語

にほんご

In line with the University's twin goals of internationalisation and developing students' global awareness, the Minor in Japanese Studies programme is primarily designed to enrich our students' major studies by content learning (eg Japanese culture, history and current affairs) at the University or during their exchange semester(s) in a Japanese university. The second objective of this Minor programme is to equip our students with intermediate competence in the Japanese language, which allows students to use Japanese in everyday situations.

| Domain | Course Code | Course Title | Dept |
|------------------------------------|----------------------|---|------|
| Core | LIN1012 [∞] | Japanese I | LML |
| | LIN1013 | Japanese II | |
| | LIN2034 | Japanese III | |
| | LIN3037 | Japanese IV | |
| Electives (choose any 1 course) | HIS3010 | Modern Japan and its Neighbors since the mid-19th Century | LCS |
| | LIN3032 | Japanese Language and Culture | LML |
| | LIN3040 | Topics in Japanese-Chinese Translation: Manga and Popular Culture | LML |

[∞] Students who have basic Japanese proficiency have the option of taking an additional elective from the list to replace LIN1012 Japanese I. Students' proficiency will be assessed before approval.

Language and Society

語言與社會

This Minor is only offered to students who are NON-English-Majors.

The Minor programme aims to develop students' knowledge in subject areas that examine the use of language in a variety of social contexts. It aims to enhance students' awareness and sensitivity to the social meanings of context-specific language use in Chinese, English, and bilingual interaction. This Minor is

only offered to students who are non-English-majors. The knowledge and skills students gained in this Minor programme will equip them with a critical and analytical mind to understand the dynamics of social interaction in monolingual mode and in bilingual settings, from everyday conversations to field-specific discourse between teachers and educators, as well as between professionals in the workplace.

1. For all students except BA(Lang Studies) - Chinese Major students

(For students admitted before 2020/21, transition period until 2024/25)

| Domain | Course Code | Course Title | Dept |
|-------------------------------------|---|--|------|
| Core | ENG1324 | Introduction to Linguistics | LML |
| | ENG2246 | Introduction to Sociolinguistics | |
| Electives (choose any 3 courses) | CHI2450 or CHI3452 | 語言傳播的理論與應用 or 篇章語言分析 | LML |
| | ENG3267 | Language and Gender | |
| | ENG3340 | Spoken and Written Discourse | |
| | ENG3346 or ENG4343 | English as a Global Language or Asian Englishes and English as a Lingua Franca in Asia | |
| | ENG4292 | Pragmatics | |
| | LIN3015 | Introduction to Translation | |
| | ENG3344 or LIN3016 | Chinese-English Contrastive Grammar or Contrastive Analysis of Languages and Translation | |
| | LIN1012 or LIN1013 or LIN1014 or LIN1017 or LIN1018 or LIN1024 or LIN1030 or LIN1033 or LIN2034 or LIN2035 or LIN2042 or LIN3029 or LIN3032 or LIN3036 | Japanese I or Japanese II or French I or French II or Korean I or French III or German I or Korean II or Japanese III or Korean III or Exploring Korean Culture and Society through Multimedia or French Language and Culture or Japanese Language and Culture or Korean Language and Culture | |

2. For BA(Lang Studies) - Chinese Major students

(For students admitted before 2020/21, transition period until 2024/25)

| Domain | Course Code | Course Title | Dept |
|-------------------------------------|---|--|------|
| Core | ENG2246 | Introduction to Sociolinguistics | LML |
| Electives (choose any 4 courses) | CHI2450 or CHI3452 | 語言傳播的理論與應用 or 篇章語言分析 | LML |
| | ENG3267 | Language and Gender | |
| | ENG3340 | Spoken and Written Discourse | |
| | ENG3346 or ENG4343 | English as a Global Language or Asian Englishes and English as a Lingua Franca in Asia | |
| | ENG4292 | Pragmatics | |
| | LIN3016 or ENG3344 | Contrastive Analysis of Languages and Translation or Chinese-English Contrastive Grammar | |
| | LIN1012 or LIN1013 or LIN1014 or LIN1017 or LIN1018 or LIN1024 or LIN1030 or LIN1033 or LIN2034 or LIN2035 or LIN2042 or LIN3029 or LIN3032 or LIN3036 | Japanese I or Japanese II or French I or French II or Korean I or French III or German I or Korean II or Japanese III or Korean III or Exploring Korean Culture and Society through Multimedia or French Language and Culture or Japanese Language and Culture or Korean Language and Culture | |

3. For all students except BA(Lang Studies) - Chinese Major students

(Applicable for Year 1 students admitted in September 2021 onwards)

| Domain | Course Code | Course Title | Dept |
|-------------------------------------|---|---|------|
| Core | ENG1324 | Introduction to Linguistics | LML |
| | ENG2246 | Introduction to Sociolinguistics | LML |
| Electives (choose any 4 courses) | CHI2450 | 語言傳播的理論與應用 | LML |
| | ENG3267 | Language and Gender | |
| | ENG3340 | Spoken and Written Discourse | |
| | ENG3346 or ENG4343 | English as a Global Language or Asian Englishes and English as a Lingua Franca in Asia | |
| | LIN2042 or LIN3029 or LIN3032 or LIN3036 | Exploring Korean Culture and Society through Multimedia or French Language and Culture or Japanese Language and Culture or Korean Language and Culture | |

4. For BA(Language Studies) - Chinese Major students

(Applicable for Year 1 students admitted in September 2021 onwards)

| Domain | Course Code | Course Title | Dept |
|-------------------------------------|---|---|------|
| Core | ENG2246 | Introduction to Sociolinguistics | LML |
| Electives (choose any 4 courses) | CHI2450 | 語言傳播的理論與應用 | LML |
| | ENG3267 | Language and Gender | |
| | ENG3340 | Spoken and Written Discourse | |
| | ENG3346 or ENG4343 | English as a Global Language or Asian Englishes and English as a Lingua Franca in Asia | |
| | LIN2042 or LIN3029 or LIN3032 or LIN3036 | Exploring Korean Culture and Society through Multimedia or French Language and Culture or Japanese Language and Culture or Korean Language and Culture | |

Studies on Chinese Language Curriculum 中國語文課程研究



This Minor aims to provide students with insights into Chinese language curriculum and instruction, and thus to foster students' ability to discover the pedagogical content knowledge required for effective Chinese teaching creatively and independently.

| Domain | Course Code | Course Title | Dept |
|-------------------------------------|----------------------|--------------|------|
| Electives (choose any 5 courses) | CHI3436 [^] | 校本語文課程與教材發展 | CHL |
| | CHI3614 | 中國語文教學心理學 | |
| | CHI3617 [^] | 課堂語言的理論與實踐 | |
| | CHI3676 | 語文教學專題研究 | |
| | CHI3677 | 各體文教學 | |
| | CHI3678 | 童書教學 | |
| | CHI3679 | 語文評估 | |
| | CHI3913 | 中國民俗故事與語文教學 | |
| | CHI3914 | 影視與中國語文教學 | |

[^] CHI3436 and CHI3617, the Major Cores of BEd(CL) (Programme Code: A5B060), are only applicable for non-BEd(CL) students.

Teaching Chinese as an International Language

國際漢語教學

This Minor aims to broaden students' understanding of teaching Chinese to non-native Chinese speakers (either in Cantonese or Putonghua). Students taking this Minor will acquire professional competence and knowledge of teaching Chinese as an international language in the local and global contexts, including local and international schools in Hong Kong.

| Domain | Course Code | Course Title | Dept |
|-------------------------------------|-------------|--------------------------|------|
| Electives (choose any 5 courses) | CHI3613 | 普通話與中國語文教學 | CHL |
| | CHI3672 | 國際漢語課程與教材設計 | |
| | CHI3673 | 國際漢語教學與評估 | |
| | CHI3674 | 國際漢語教學話語分析 | |
| | CHI3675 | 粵普對比分析 | |
| | CHI4615 | 中國語文課程 (非華語學生) 單元教學設計及開發 | |
| | CHI4671 | 國際漢語學習與習得 | |

Translation

翻譯

This Minor is designed to develop students' Chinese and English translation skills, strengthen their Chinese and English language proficiency, enhance their cultural awareness and train them to become bilingual communicators. It also aims to widen students' interdisciplinary horizons and broaden their career options.

| Domain | Course Code | Course Title | Dept |
|-------------------------------------|---|---|------|
| Core | LIN3015* | Introduction to Translation | LML |
| | LIN3016 | Contrastive Analysis of Languages and Translation | |
| | LIN3023 | Practical Translation | |
| Electives (choose any 2 courses) | CHI2450 | Language Communication: Theory and Practice | LML |
| | CHI3452 | 篇章語言分析 | |
| | CHI3565 [□] | Chinese Rhetoric | |
| | ENG2325 [∨] | English Grammar I | |
| | ENG2336 [◆] | Intercultural Communication | |
| | ENG3329 [∨] | English Grammar II | |
| | ENG3344 [■] | Chinese-English Contrastive Grammar | |
| | ENG4269 [■] | Comparative Language Studies | |
| | LIN3031 | Culture and Translation | |
| | LIT3011 | Chinese Literature in English Translation | |
| LIT4021 [●] | Comparative Study of Chinese and Western Literature | | |

The courses that the following notes refer to are Major (Core)/Common Core courses for the programmes concerned and thus are not applicable for obtaining the Minor.

* Not applicable for BA(Lang Studies) students [2015-19 cohort and onwards]. Students concerned are required to take 1 more elective (total 3 electives) as substitution.

[□] Not applicable for BA(Lang Studies) Chinese Major and BEd(CL) students.

[∨] Not applicable for BA(Lang Studies) English Major students.

[◆] Not applicable for BA(Lang Studies) and BA(TCSL) students.

[■] Not applicable for BA(Lang Studies) students [2014-18 cohort and before] and BA(TCSL) students. For students in BA(Lang Studies) [2015-19 cohort and onwards] and other programmes, they could choose either ENG3344 or ENG4269 as elective.

[●] Not applicable for BA(Lang Studies) students.

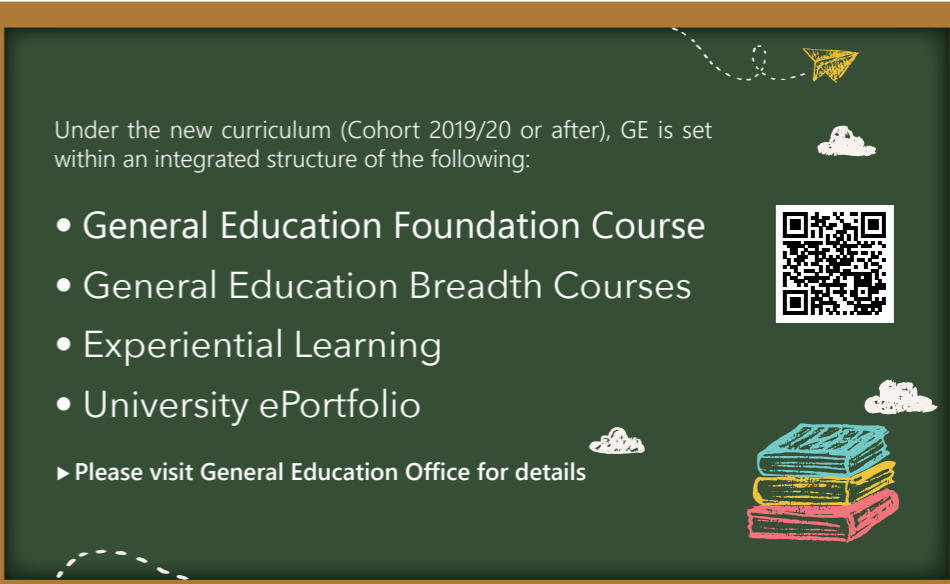
GENERAL EDUCATION

General Education (GE) aims to broaden students' intellectual horizons, help them make connections among different areas of knowledge between their formal studies and life outside the classroom, and strengthen their capacity for sound thinking and good judgement. GE offers a varied but balanced mix of individual courses across a range to subject areas and disciplines.

Under the new curriculum (Cohort 2019/20 or after), GE is set within an integrated structure of the following:

- General Education Foundation Course
- General Education Breadth Courses
- Experiential Learning
- University ePortfolio

▶ Please visit General Education Office for details



General Education Breadth Courses

The General Education Breadth Courses (GEBs) are composed of three components, namely General Education Breadth Learning Strands (GELS), Positive and Values Education (PAVE) Courses and General Education Interdisciplinary Courses (GEICs). Students have to take one of each component for fulfilling the GEBs requirement (9 cps).

| Component | Course Code | Course Title | Dept |
|-----------|-------------|---|------|
| GELS | GEF1019 | Travellers and Other Cultures: Literature and History | LCS |
| | GEG1055 | 書法與中國文化 | CHL |
| | GEG1060 | Korean Popular Culture in Hong Kong | LCS |
| | GEH1002 | Critical Thinking for Everyday Life: Exploring the Evidence | ELE |
| | GEK1014 | 正向人生與道家、道教 | CHL |
| PAVE | GEK1027 | Multiculturalism and International Mindedness | CHL |
| | GEK2012 | Writing Your Life | ELE |
| | GEK2020 | Positive Communication in Educational Settings | ELE |
| | GEK2022 | Perspectives on Difference: Promoting Social Awareness and Positivity | LCS |
| | GEK2031 | Positive Intercultural Communication in Everyday Life | CHL |
| GEICs | GEI4003 | Ideals and Reality: Urban Environments | ELE |
| | GEI4005 | Biographical Films: Arts, Societies and Human Development | LCS |
| | GEI4011 | Work: From Factory Floor to Our Robot Future | LCS |

Experiential Learning

Experiential Learning (EL) is composed of a 3-cp Co-curricular and Service Learning Course (CSLCs) and a 3-cp Experiential Learning Course (ELCs). Students are required to take one course from each component.

| Component | Course Code | Course Title | Dept |
|-----------|-----------------|---|------|
| CSLCs | CSL1015/GEM1029 | Understanding Linguistic and Related Barriers through Services to Socially Disadvantaged Children | LML |
| | CSL1034/GEM1030 | Transforming Children through Reading Stories in English | ELE |
| | CSL1035/GEM1038 | 語文嘉年華 | CHL |
| | CSL1037/GEM1039 | 創意戲劇策略與語文教室 | CHL |
| | CSL2033/GEM2023 | 中文報道及口述歷史寫作 | LCS |
| ELCs | GEL1001 | Exploring Hong Kong's Rural Heritage and Nature (for 2018/19 cohort and onwards only) | ELE |

The courses with a course code with "CSL" are offered to students of 2018/19 cohort and before, while the courses with a course code with "GEM" are offered to students of 2019/20 cohort and onwards.

[New EL courses are coming soon!](#)

University ePortfolio

Under the new curriculum from 2019/20 cohorts onwards, General Education Consolidation Course (GECC) will be phased out and transformed into University ePortfolio (UePortfolio) course. Students are required to take one course (3 cps) as "capstone" course. FHM offers the following UePortfolio courses in 2022/23.

| Component | Course Code | Course Title | Dept |
|-------------|-------------|--|------|
| UePortfolio | GEJ4021 | The Language We Live By | CHL |
| | GEJ4022 | Becoming a Language Educator in the Era of Change | ELE |
| | GEJ4023 | Enhancing Critical Literacy through Current Social Issues | ELE |
| | GEJ4025 | Building your UePortfolio on Multilingual Self and Society | LML |
| | GEJ4026 | Culture and Contemporary Life | LCS |



FREE ELECTIVE COURSES

On top of the Major courses, free electives provide greater flexibility and multiple learning pathways for students to develop their interests and explore their career aspirations. Each course carries 3 cps.

| Course Code | Course Title | Dept |
|-------------|---|------|
| CHI1559 | 現代漢語 | CHL |
| CHI1666 | 現代漢語通論 | CHL |
| CHI2571 | 媒體寫作 | LCS |
| CHI3436 | 校本語文課程與教材發展 | CHL |
| CHI3565 | 漢語修辭學 | LML |
| CHI3573 | 漢語語言學專題 | CHL |
| CHI3575 | 漢字學 | CHL |
| CHI3613 | 普通話與中國語文教學 | CHL |
| CHI3614 | 中國語文教學心理學 | CHL |
| CHI3617 | 課堂語言的理論與實踐 | CHL |
| CHI3672 | 國際漢語課程與教材設計 | CHL |
| CHI3673 | 國際漢語教學與評估 | CHL |
| CHI3674 | 國際漢語教學話語分析 | CHL |
| CHI3675 | 粵普對比分析 | CHL |
| CHI3676 | 語文教學專題研究 | CHL |
| CHI3677 | 各體文教學 | CHL |
| CHI3678 | 童書教學 | CHL |
| CHI3679 | 語文評估 | CHL |
| CHI3712 | 粵語與香港本土文化 | CHL |
| CHI3713 | 普通話語音研習及理論應用 | CHL |
| CHI3714 | 古代漢語 | CHL |
| CHI3725 | 語文教學與資訊科技素養 | CHL |
| CHI3741 | 朗誦與語文教學 | CHL |
| CHI3913 | 中國民俗故事與語文教學 | CHL |
| CHI3914 | 影視與中國語文教學 | CHL |
| CHI4577 | 漢語音韻學 | CHL |
| CHI4585 | 中國傳統語言學專書研讀 | CHL |
| CHI4615 | 中國語文課程(非華語學生)單元教學設計及開發 | CHL |
| CHI4671 | 國際漢語學習與習得 | CHL |
| CUS1001 | 中國傳統人生哲學 | LCS |
| CUS1002 | 中國文化概說 | LCS |
| CUS2004 | 中國電影: 創作、風格和接受 | LCS |
| CUS2012 | English Language Popular Culture | LCS |
| CUS3007 | 儒道文化互動 | LCS |
| CUS3014 | Introduction to Film Studies | LCS |
| CUS4019 | 中國思想: 原典選讀 | LCS |
| ENG1249 | English Grammar for Teachers I | LML |
| ENG1324 | Introduction to Linguistics | LML |
| ENG1326 | Introduction to English Phonetics and Phonology | LML |
| ENG2246 | Introduction to Sociolinguistics | LML |
| ENG2250 | English Grammar for Teachers II | LML |
| ENG2325 | English Grammar I | LML |
| ENG2336 | Intercultural Communication | LML |
| ENG2347 | Words and Their Meanings | LML |
| ENG3267 | Language and Gender | LML |
| ENG3329 | English Grammar II | LML |
| ENG3340 | Spoken and Written Discourse | LML |
| ENG3344 | Chinese-English Contrastive Grammar | LML |
| ENG3346 | English as a Global Language | LML |
| ENG3400 | Advanced Phonology | LML |
| ENG4292 | Pragmatics | LML |
| HIS1003 | Introduction to Historical Ideas and Practices | LCS |
| HIS1004 | Life in the Ancient World | LCS |
| HIS1043 | Modern Hong Kong: From Opium War to Basic Law | LCS |

| Course Code | Course Title | Dept |
|-------------|---|------|
| HIS2008 | China: Reform and Revolution from Late Qing to 1949 | LCS |
| HIS2042 | 中國歷史(三): 宋至清中葉 | LCS |
| HIS3009 | Revolution and Modernity: History of the PRC | LCS |
| HIS3011 | The Making of Modern Asia: Decolonization and Independence | LCS |
| HIS3012 | World War and World Peace | LCS |
| HIS3024 | 中國政治及法律制度史 | LCS |
| HIS3038 | 近代中國文化史: 電影、流行文化和政治 | LCS |
| HIS3047 | 中國歷史地理 | LCS |
| HIS3053 | 臺灣歷史: 傳統與現代的連結 | LCS |
| HIS4015 | Historiography | LCS |
| HIS4048 | 中國思想史 | LCS |
| LIN1012 | Japanese I | LML |
| LIN1013 | Japanese II | LML |
| LIN1014 | French I | LML |
| LIN1017 | French II | LML |
| LIN1018 | Korean I | LML |
| LIN1024 | French III | LML |
| LIN1033 | Korean II | LML |
| LIN1041 | The French-speaking World in Films | LML |
| LIN2020 | Child Language Development | LML |
| LIN2028 | French Art and Culture | LML |
| LIN2034 | Japanese III | LML |
| LIN2035 | Korean III | LML |
| LIN2042 | Exploring Korean Culture and Society through Multimedia | LML |
| LIN3015 | Introduction of Translation | LML |
| LIN3016 | Contrastive Analysis of Language and Translation | LML |
| LIN3021 | Language, Brain, and the Mind | LML |
| LIN3023 | Practical Translation | LML |
| LIN3025 | French IV | LML |
| LIN3026 | Advanced French | LML |
| LIN3027 | Contemporary French Society | LML |
| LIN3029 | French Language and Culture | LML |
| LIN3031 | Culture and Translation | LML |
| LIN3032 | Japanese Language and Culture | LML |
| LIN3036 | Korean Language and Culture | LML |
| LIN3037 | Japanese IV | LML |
| LIN3040 | Topics in Japanese-Chinese Translation: Manga and Popular Culture | LML |
| LIN4001 | Language and the Human Footprint | LML |
| LIT1001 | 文學概論 | LCS |
| LIT1002 | 兒童文學 | LCS |
| LIT1040 | Approaching English Literature | LCS |
| LIT2003 | 文學創作 | LCS |
| LIT2006 | 中國古代文學(一)(先秦-隋唐) | LCS |
| LIT2007 | 中國古代文學(二)(宋-清) | LCS |
| LIT2008 | 中國現代文學 | LCS |
| LIT2043 | Literatures in English I: Fiction | LCS |
| LIT2045 | Literatures in English II: Drama | LCS |
| LIT2048 | Literature in Context I: 1789 – 1914 | LCS |
| LIT3011 | Chinese Literature in English Translation | LCS |
| LIT3013 | 專家詩 | LCS |
| LIT3014 | 香港文學 | LCS |
| LIT3016 | 文學經典作品選讀 | LCS |
| LIT3046 | Creative Writing | LCS |
| LIT3047 | Literatures in English: Poetry | LCS |
| LIT3050 | Readings in New Literatures in English | LCS |
| LIT3052 | Literature in Context II: 1914 – 2000 | LCS |
| LIT4020 | 中國文學批評 | LCS |
| LIT4055 | Postcolonial Literatures in English | LCS |
| LIT4056 | Literature and Film | LCS |
| LIT4060 | Literature and the Environment | LCS |
| LIT5030 | 周易 | LCS |

ENQUIRIES

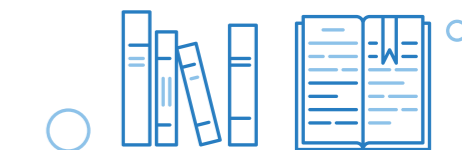


| | Offering Programme/ Department | Second Major | Minor | Programme/ Departmental Coordinator | Enquiries |
|--|--------------------------------|--------------|-------|--|---|
| Chinese Language 中國語文 | BEd(CL) Programme | √ | √ | Dr HO Chi Hang 2948 7350 chho@eduhk.hk | Ms Doris CHAN 2948 7964 a5b060@eduhk.hk |
| Chinese Religions and Culture 中國宗教與文化 | LCS | - | √ | Dr FUNG Shu Fun 2948 7191 sffung@eduhk.hk | Ms Sandy CHAN 2948 6180 yeeman@eduhk.hk |
| English Language 英國語文 | BEd(EL) Programme | √ | √ | Ms CHAN Ka Yin Clairine 2948 7392 cky@eduhk.hk | Ms Karen LAU 2948 7152 a5b059@eduhk.hk |
| English Language Teaching (Primary) 英語教育(小學) | ELE | - | √ | Ms CHAN Ka Yin Clairine 2948 7392 cky@eduhk.hk | Ms Ingrid LAW 2948 7269 ikllaw@eduhk.hk |
| English Language Teaching (Secondary) 英語教育(中學) | | | √ | | |
| Film and Popular Culture 電影與流行文化 | LCS | - | √ | Dr BANERJEE Bidisha 2948 6010 banerjee@eduhk.hk | Ms Sandy CHAN 2948 6180 yeeman@eduhk.hk |
| French Studies 法語 | LML | - | √ | Ms MOULIMOIS Alice 2948 7254 moulimoisal@eduhk.hk | Ms Teresa YEUNG 2948 7263 tysyeung@eduhk.hk |
| Japanese Studies 日語 | | | √ | Mr CHEN Charles Chun Jr 2948 7902 charleschenjr@eduhk.hk | |
| Language and Society 語言與社會 | | | √ | Dr CHIN Chi On Andy 2948 7780 andychin@eduhk.hk | |
| Studies on Chinese Language Curriculum 中國語文課程研究 | CHL | - | √ | Dr HO Chi Hang 2948 7350 chho@eduhk.hk | Ms Carol CHOW 2948 8153 ckaman@eduhk.hk |
| Teaching Chinese as an International Language 國際漢語教學 | | | √ | | |
| Translation 翻譯 | LML | - | √ | Dr LIU Fung Ming Christy 2948 7887 liufm@eduhk.hk | Ms Teresa YEUNG 2948 7263 tysyeung@eduhk.hk |

Every effort has been made to ensure that information contained in this website is correct. Changes to any aspects of the programmes may be made from time to time due to unforeseeable circumstances beyond our control and the University reserves the right to make amendments to any information contained in this website without prior notice. The University accepts no liability for any loss or damage arising from any use or misuse of or reliance on any information contained in this booklet.

Please refer to Registry's website at www.eduhk.hk/re for requirements, application procedures and other details.

The information given in this booklet is accurate as of March 2022.
Please refer to FHM's programme website at www.eduhk.hk/fhm/en/page/second-major-and-minor for the latest course information.





FACULTY OF HUMANITIES | 學人院文
人脈弘道 *Humanity can broaden the Way*

 **Faculty of Humanities**

The Education University of Hong Kong
B2-G/F-04, 10 Lo Ping Road, Tai Po
New Territories, Hong Kong

 (852) 2948 7237

 (852) 2948 6199

 fhm@eduhk.hk



www.eduhk.hk/fhm



[www.instagram.com/
eduhk.fhm](https://www.instagram.com/eduhk.fhm)



[www.facebook.com/
eduhk.fhm](https://www.facebook.com/eduhk.fhm)